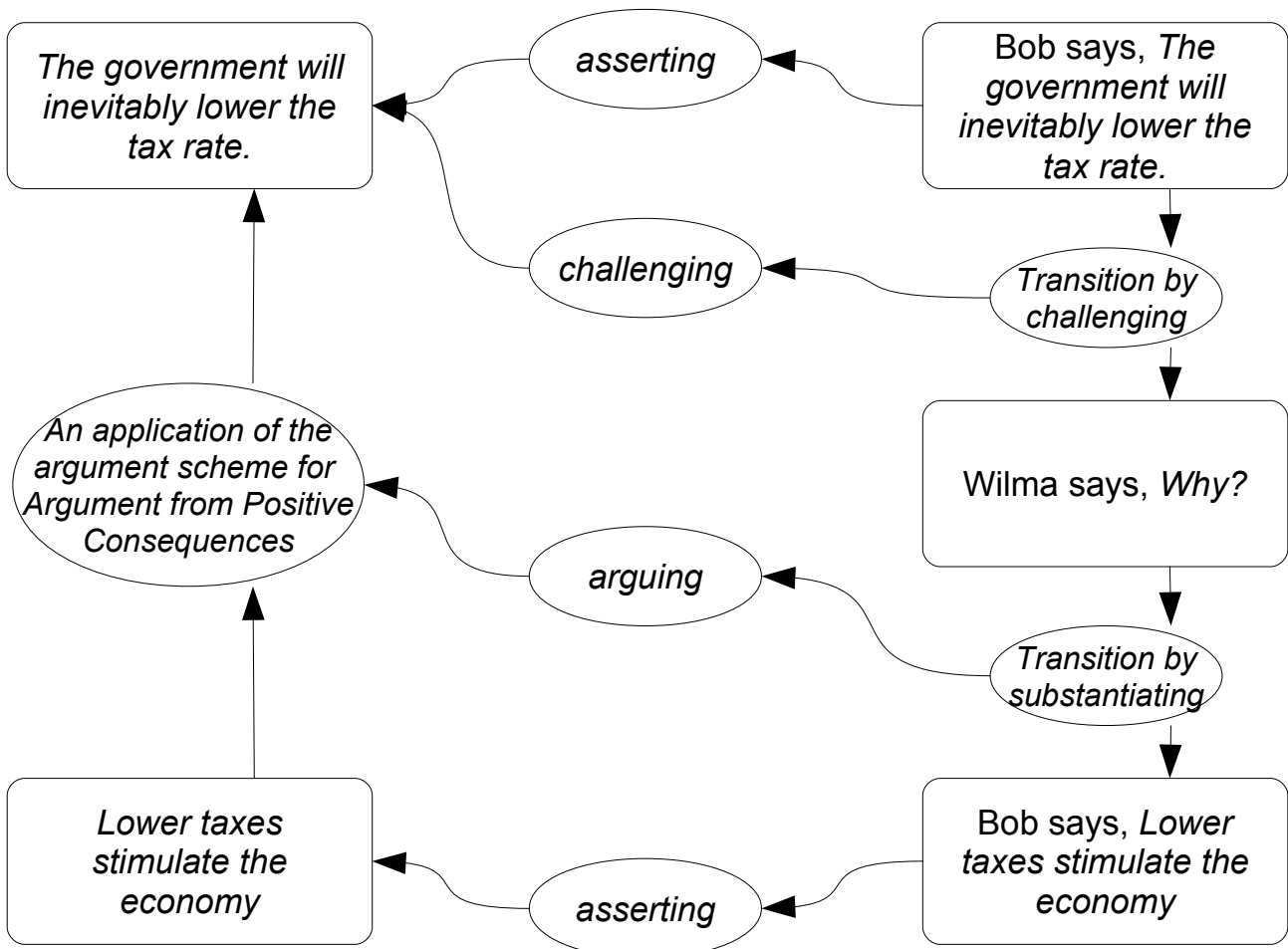


Inference Anchoring Theory, IAT, annotation scheme (Budzynska and Reed 2011)

- propositional relations (on the left) including inference, conflict and rephrase
- dialogical structures (on the right) including locution and transitions (reply structure)
- illocutionary structures (in the middle) see below



Annotation scheme for illocutionary connections (Budzynska, Janier, Reed & Saint-Dizier 2016):

1. anchored in locutions (if not indexical):
 - asserting
 - questioning
 - pure
 - assertive
 - rhetorical
 - challenging
 - pure
 - assertive
 - rhetorical
 - popular conceding
2. anchored in transitions
 - arguing
 - disagreeing
 - agreeing
 - restating (for rephrase)

Examples for analysis (*The Moral Maze* BBC programme)

Example 1

LA: It was a ghastly aberration.

CL: Or was it in fact typical? Was it the product of a policy that was unsustainable that could only be pursued by increasing repression?

Example 2

MB: What do you think is going on here? If there is an element, if you like, of retrospective moral judgements, are there problems with that?

LA: I always have a problem of judging the past by our values. It seems to me a mixture of arrogance and absurdity.

MB: Okay, Matthew Taylor?

MT: I don't see really what the problem is here. There are three people who it seems very likely suffered, they suffered in the context of imprisonment possibly, the way they suffered was a crime, in almost any jurisdiction in the world it would be seen as a crime, they have the opportunity now to try to seek justice, the closest they can get to the people who actually committed this is the British state, and they're pursuing their case. What's wrong with this?